

**Mission Building Team Annual Report**  
**2023**  
**Ephraim Mosher**

The Mission Building Team was formed after a previous parish meeting voted to not consider moving from our current location, and to instead investigate options to maximize the potential of our current facilities. The team set out to consider how our physical space helps or hinders our ability to carry out the mission of the gospel in our community. We discussed the challenges and blessings of our physical space as a team, and conducted a survey of the parish at large to gather thoughts from our wider community. The survey provided us with ideas for opportunities to build relationships within our neighborhood. At the center of all this discussion was this question: how can our space better serve us as a parish, and our wider community?

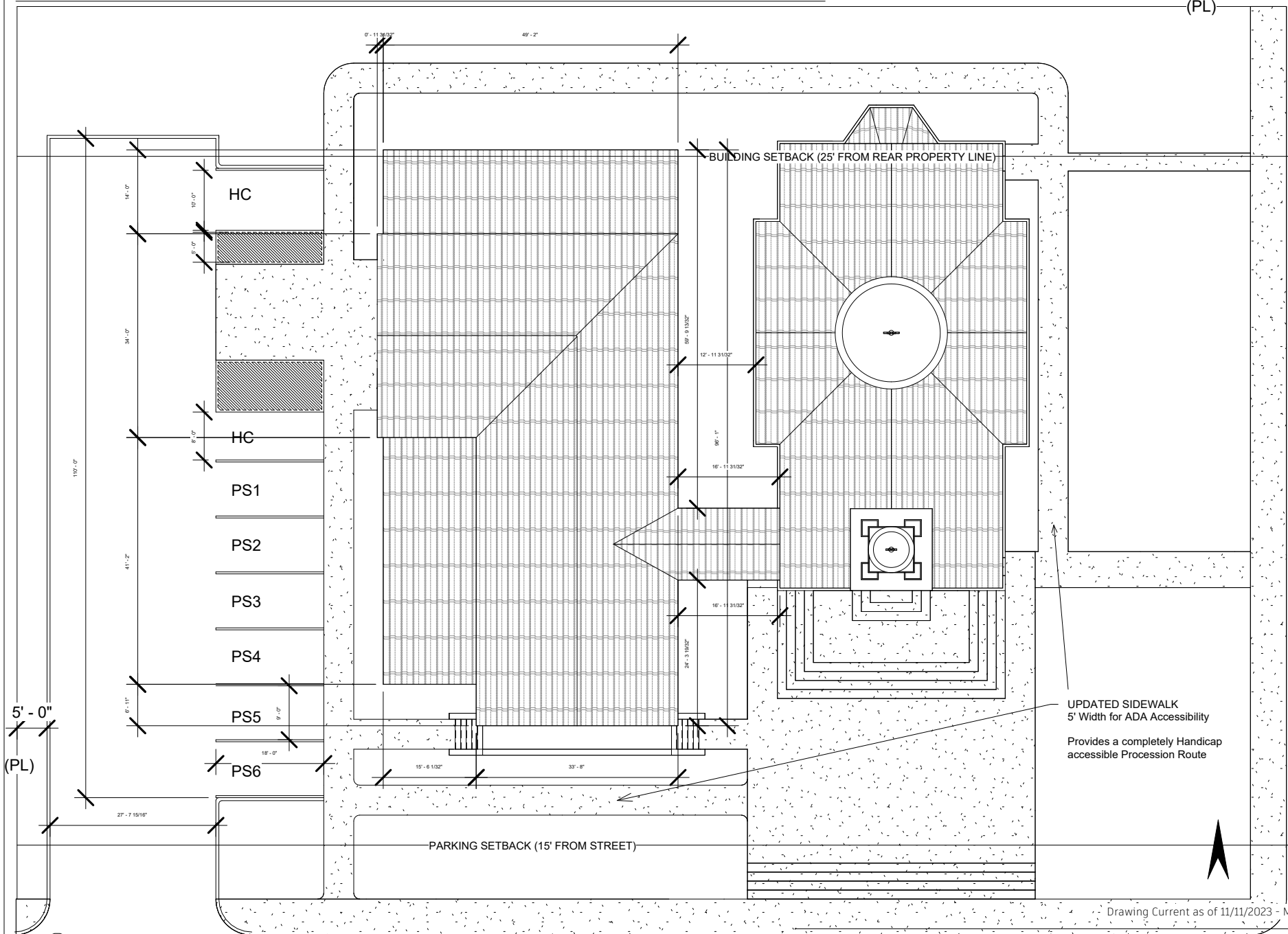
While our Parish has been blessed with a wonderful worship space, as we continue to grow, problems with our facilities are becoming apparent. The most pressing issues identified are handicap accessibility, lack of sufficient space for fellowship and education at the same time, a very limited kitchen, no meaningful storage, our basement not being up to code, the lack of an adequate office space, and being forced to rely on the city for parking. Several plans for remedying these problems have been thrown around over the years but all of them have at best only proposed to tackle a few of these issues and at worst would limit our ability to expand in the future.

Observing these problems, I set out to act on the decision of a previous parish meeting when our parish sold our hall many years ago: to investigate the possibility of building a new hall adjacent to our church. At the time of that decision, the parish earmarked the proceeds from the sale of the hall for the possibility of such a construction. Over the past year, I worked with my friend Mark Yuschak (a 5th year architecture student and faithful member of our sister parish

Christ the Savior) to develop an early stage schematic and exploration of a potential expansion that would address all the problems listed above. These drawings are an initial pass and do not represent a professional plan or layout, however, Mark has been trained in making these at a professional level and this has had a lot of thought put into it. All measurements are estimates but should be roughly accurate.

These early schematics are not set in stone and are obviously subject to changes as more details and specifications are determined, but I believe it is an excellent starting point and the bones of an increased presence in the community which can and, by the grace of God, will lead to the further growth of our parish. This is not a minor project. It would take a substantial number of resources, time, and planning to accomplish as well as requiring us to demolish the apartment house. A low-ball estimate of cost purely based on the square footage of the building itself would be over a million dollars. However, addressing all the aforementioned issues with one project is more cost effective than a dozen smaller projects that are all expensive in their own right. This expansion would open many options for parish life such as more substantial hospitality, workshops, events, and educational opportunities. Additionally, a project like this would provide us with the possibility of greatly increased community outreach. We need to make a substantive investment in our facilities if we want to see continued growth.

(PL)

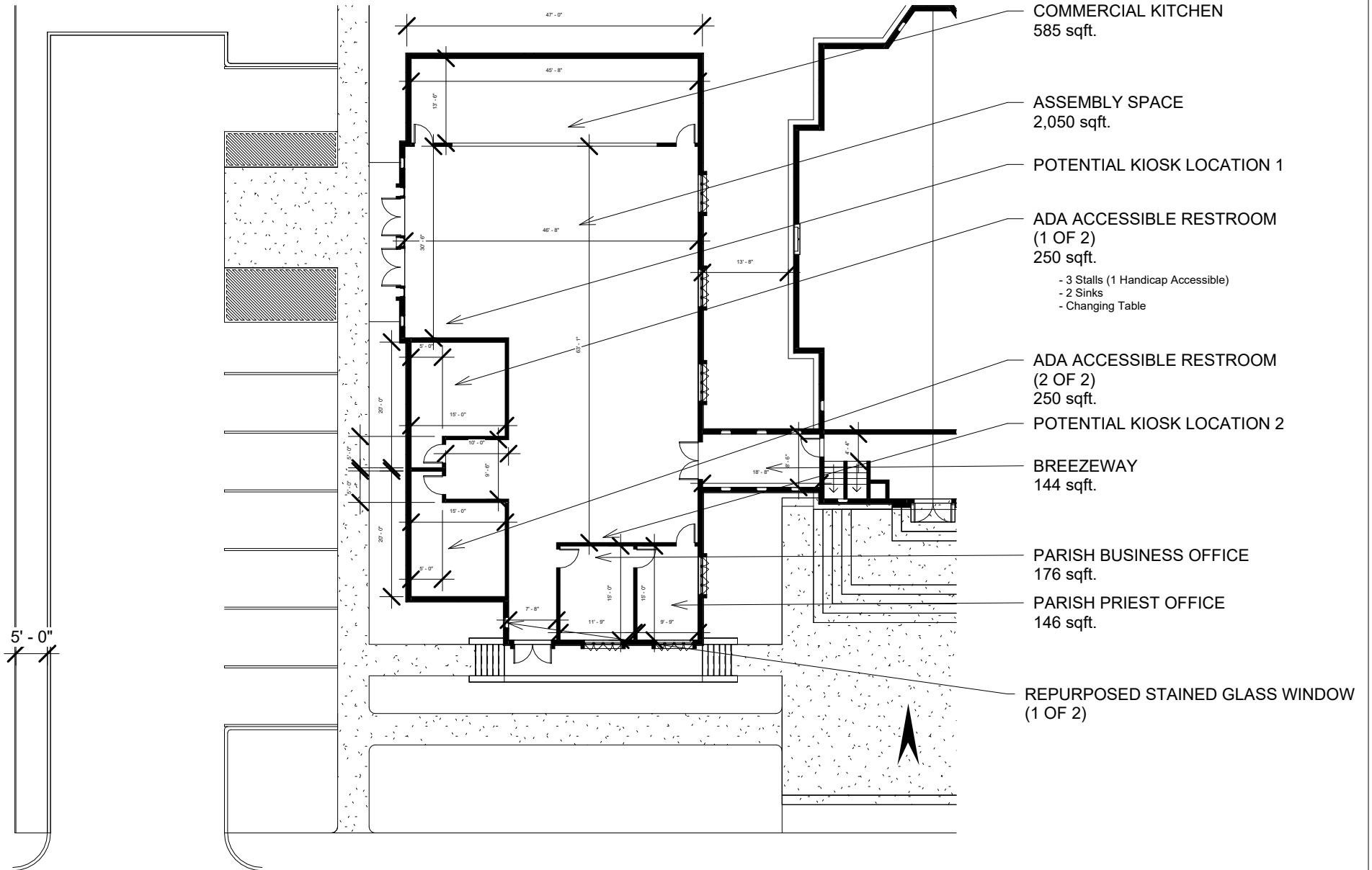


UPDATED SIDEWALK  
5' Width for ADA Accessibility  
Provides a completely Handicap  
accessible Procession Route



Drawing Current as of 11/11/2023 - M.Y.

Ss. Peter and Paul Orthodox Church, Meriden, CT - Mission Building Team - Parish Expansion Project



- COMMERCIAL KITCHEN  
585 sqft.
- ASSEMBLY SPACE  
2,050 sqft.
- POTENTIAL KIOSK LOCATION 1
- ADA ACCESSIBLE RESTROOM  
(1 OF 2)  
250 sqft.
  - 3 Stalls (1 Handicap Accessible)
  - 2 Sinks
  - Changing Table
- ADA ACCESSIBLE RESTROOM  
(2 OF 2)  
250 sqft.
- POTENTIAL KIOSK LOCATION 2
- BREEZEWAY  
144 sqft.
- PARISH BUSINESS OFFICE  
176 sqft.
- PARISH PRIEST OFFICE  
146 sqft.
- REPURPOSED STAINED GLASS WINDOW  
(1 OF 2)

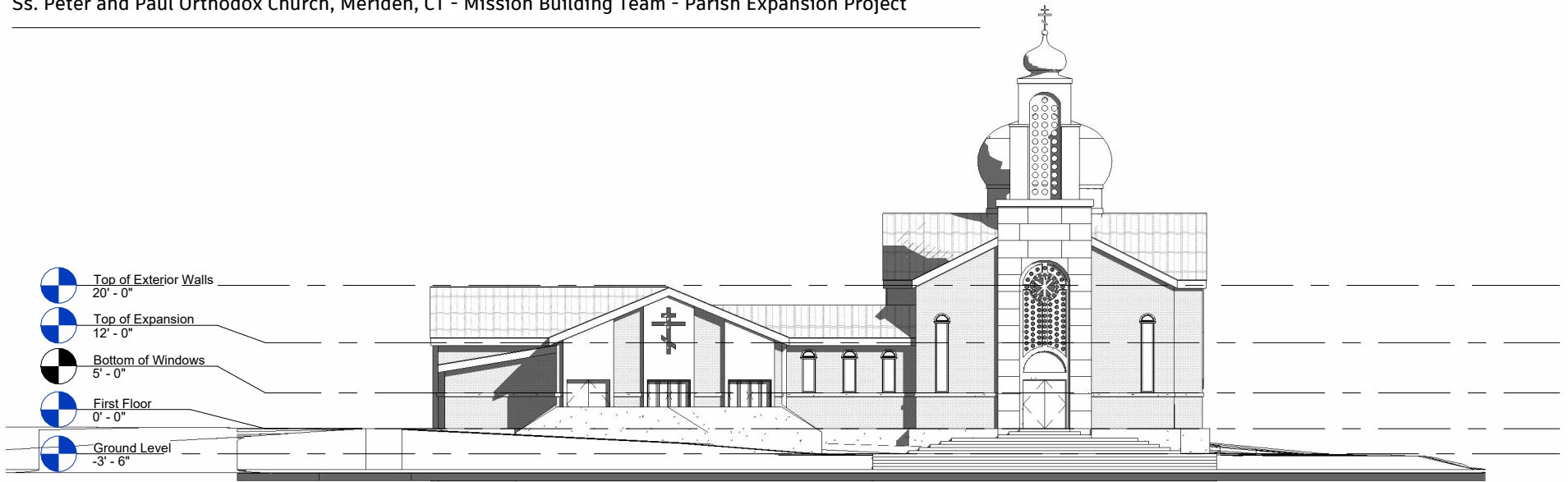
5' - 0"

1 First Floor  
1" = 20'-0"

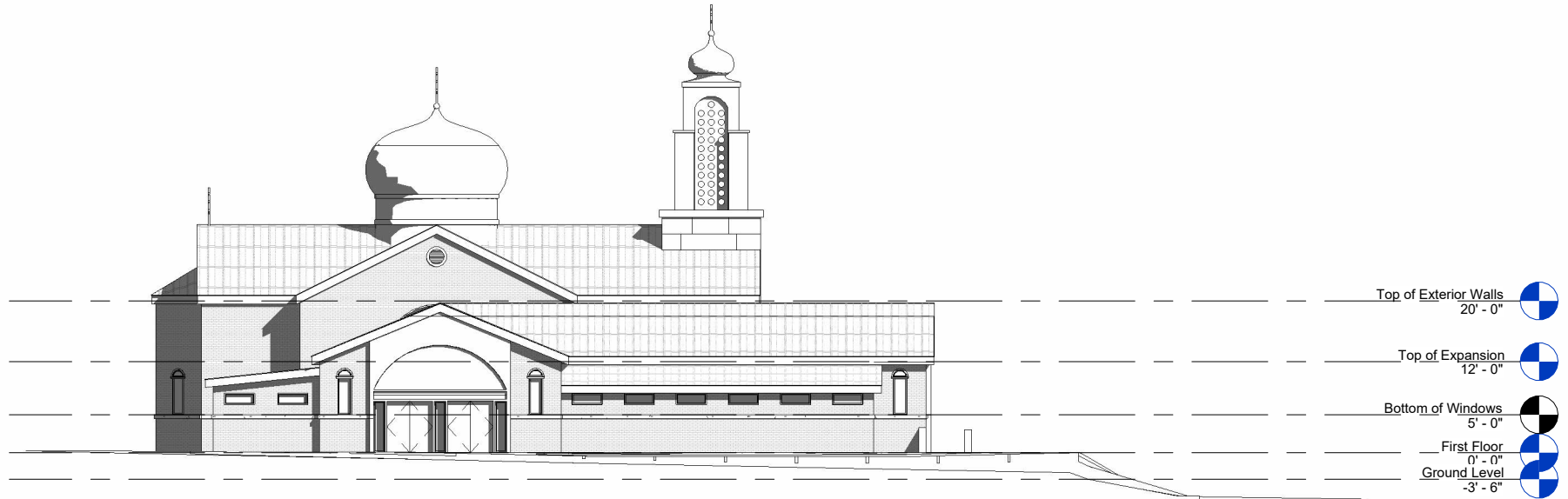
Drawing Current as of 11/11/2023 - M.Y.

**SCHEMATIC DESIGN EXPLORATION - NOT FOR CONSTRUCTION**

Ss. Peter and Paul Orthodox Church, Meriden, CT - Mission Building Team - Parish Expansion Project



1 South Elevation  
1" = 20'-0"

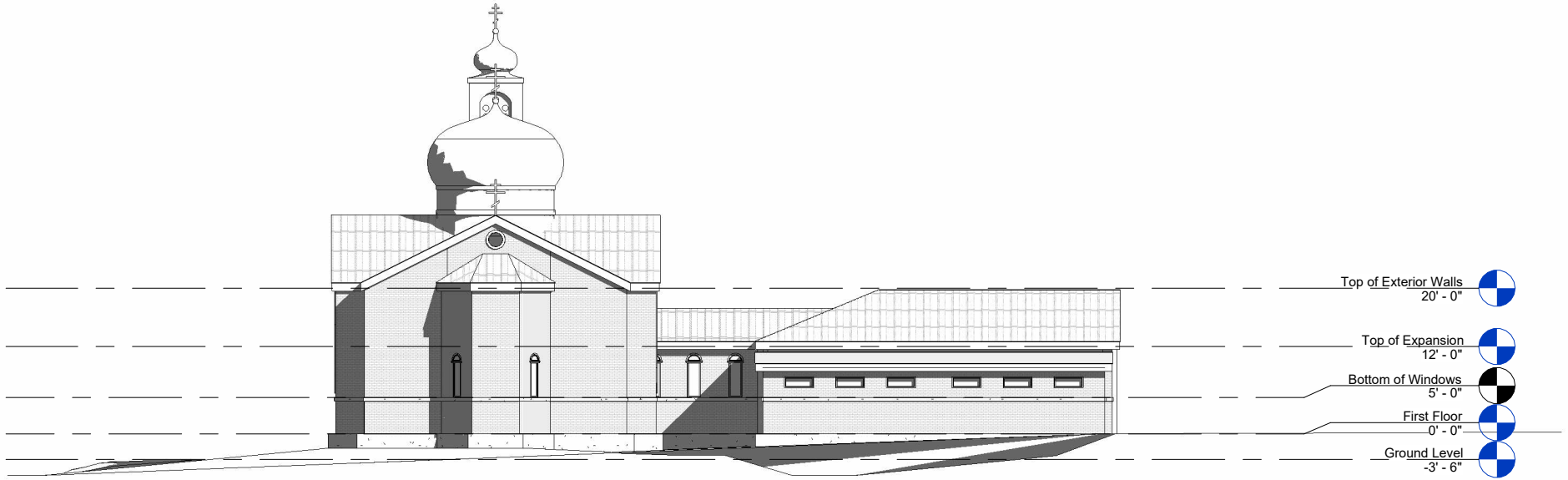


2 West Elevation  
1" = 20'-0"

Drawing Current as of 11/11/2023 - M.Y.

**SCHEMATIC DESIGN EXPLORATION - NOT FOR CONSTRUCTION**

Ss. Peter and Paul Orthodox Church, Meriden, CT - Mission Building Team - Parish Expansion Project



1 North  
1" = 20'-0"



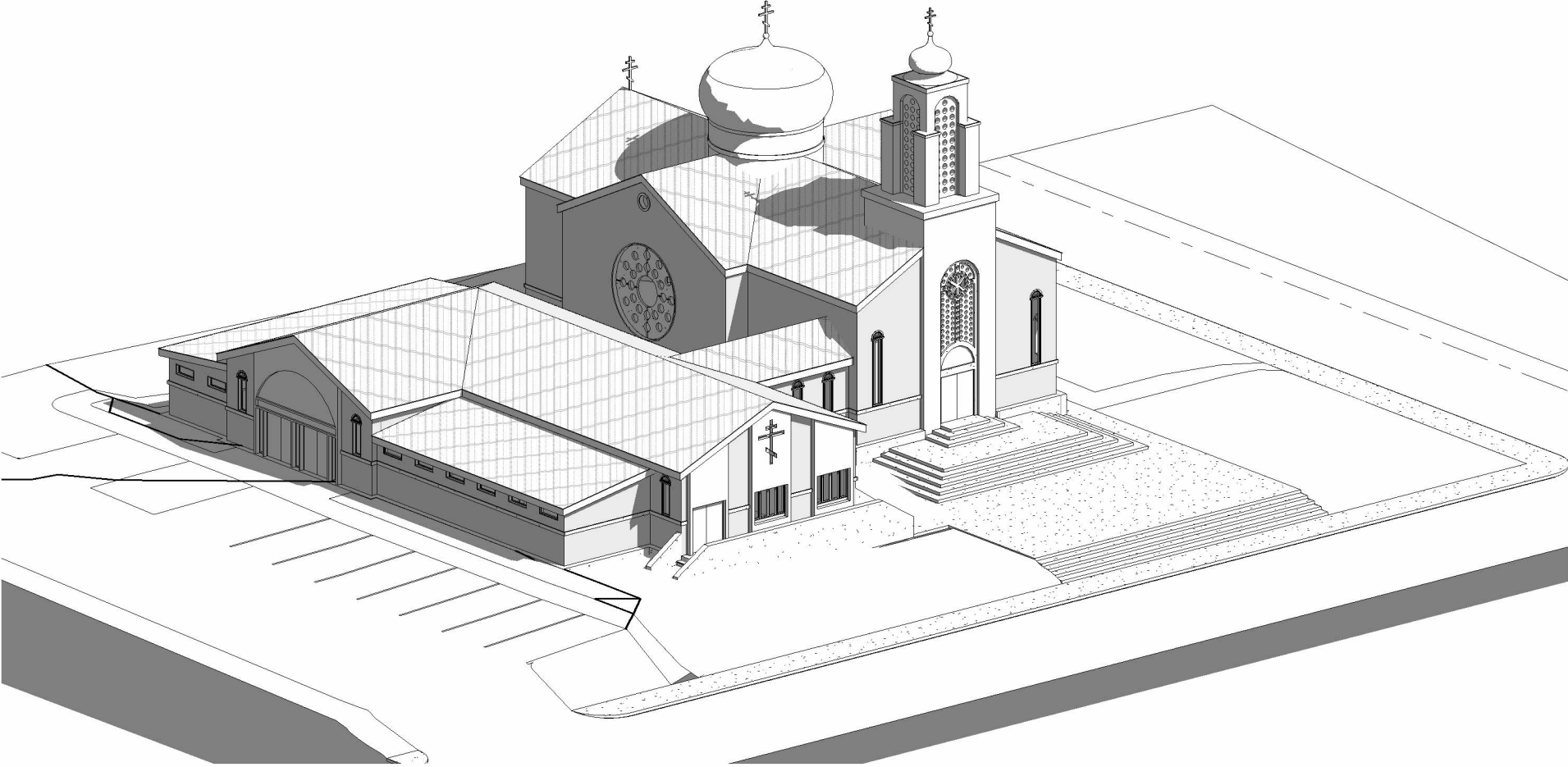
2 East Elevation  
1" = 20'-0"

Drawing Current as of 11/11/2023 - M.Y.

**SCHEMATIC DESIGN EXPLORATION - NOT FOR CONSTRUCTION**



1 Southeast Aerial Perspective



1 Southwest Aerial Perspective





1 Northwest Aerial Perspective